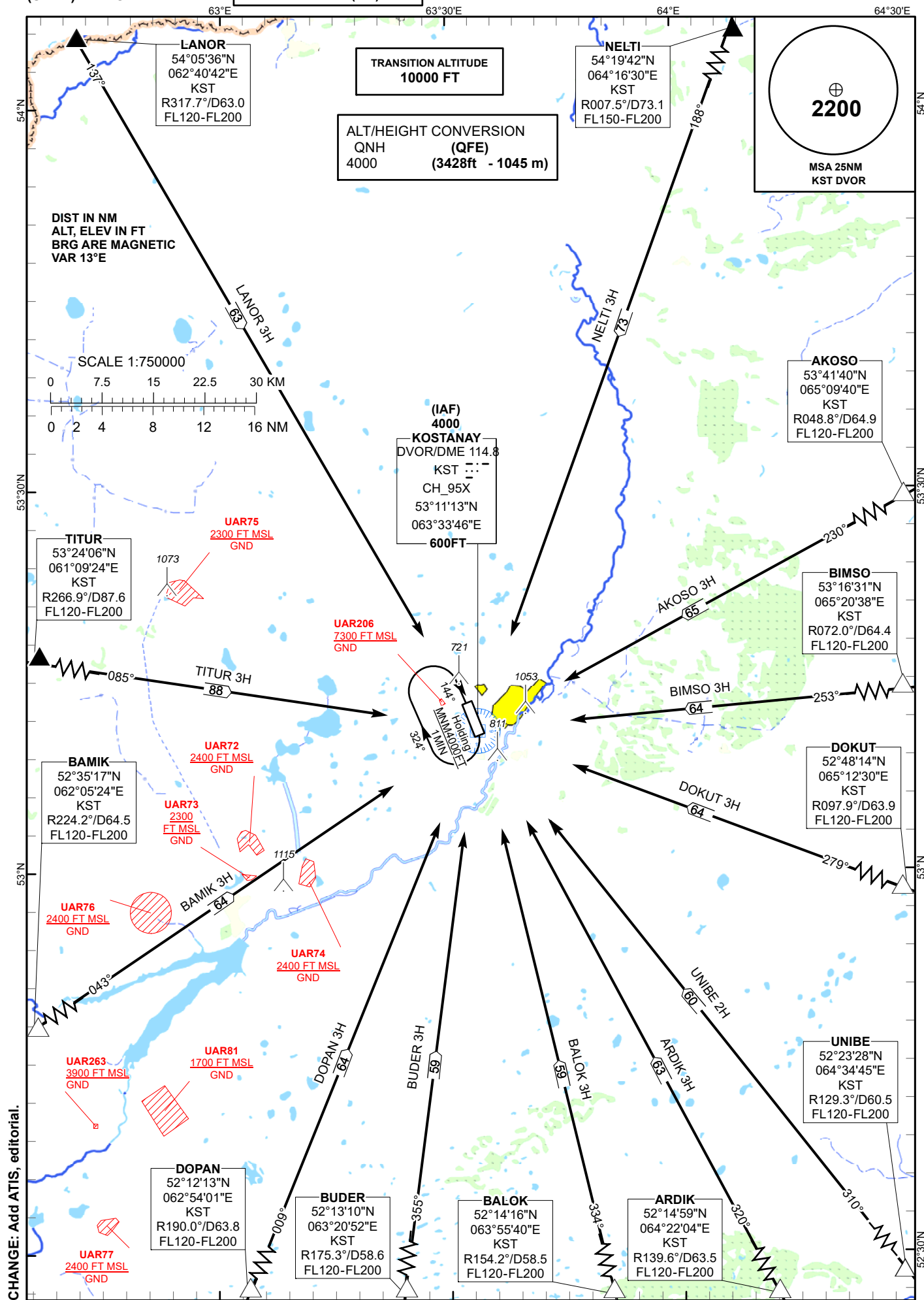


STANDARD ARRIVAL  
CHART - INSTRUMENT  
(STAR) - ICAO

KOSTANAY TOWER 129.30  
KOSTANAY ATIS (EN) 118.5  
KOSTANAY ATIS (RU) 126.8

NELTI 3H, AKOSO 3H, BIMSO 3H, DOKUT 3H,  
ARDIK 3H, BALOK 3H, BUDER 3H, DOPAN 3H,  
BAMIK 3H, TITUR 3H, LANOR 3H, UNIBE 2H.

KOSTANAY  
RWY 32



<b>Standard Arrival Routes Instrument (STAR) KOSTANAY RWY 32</b>
<b>NELTI 3H</b> After crossing NELTI (R007.5° D73.1NM KST), proceed on track 188° to DVOR/DME KST. Cross NELTI at FL150 – FL200. Cross DVOR/DME KST at 4000FT.
<b>AKOSO 3H</b> After crossing AKOSO (R048.8° D64.9NM KST), proceed on track 230° to DVOR/DME KST. Cross AKOSO at FL120 – FL200. Cross DVOR/DME KST at 4000FT.
<b>BIMSO 3H</b> After crossing BIMSO (R072.0° D64.4NM KST), proceed on track 253° to DVOR/DME KST. Cross BIMSO at FL120 – FL200. Cross DVOR/DME KST at 4000FT.
<b>DOKUT 3H</b> After crossing DOKUT (R097.9° D63.9NM KST), proceed on track 279° to DVOR/DME KST. Cross DOKUT at FL120 – FL200. Cross DVOR/DME KST at 4000FT.
<b>ARDIK 3H</b> After crossing ARDIK (R139.6° D63.5NM KST), proceed on track 320° to DVOR/DME KST. Cross ARDIK at FL120 – FL200. Cross DVOR/DME KST at 4000FT.
<b>BALOK 3H</b> After crossing BALOK (R154.2° D58.5NM KST), proceed on track 334° to DVOR/DME KST. Cross BALOK at FL120 – FL200. Cross DVOR/DME KST at 4000FT.
<b>BUDER 3H</b> After crossing BUDER (R175.3° D58.6NM KST), proceed on track 355° to DVOR/DME KST. Cross BUDER at FL120 – FL200. Cross DVOR/DME KST at 4000FT.
<b>DOPAN 3H</b> After crossing DOPAN (R190.0° D63.8NM KST), proceed on track 009° to DVOR/DME KST. Cross DOPAN at FL120 – FL200. Cross DVOR/DME KST at 4000FT.
<b>BAMIK 3H</b> After crossing BAMIK (R224.2° D64.5NM KST), proceed on track 043° to DVOR/DME KST. Cross BAMIK at FL120 – FL200. Cross DVOR/DME KST at 4000FT.
<b>TITUR 3H</b> After crossing TITUR (R266.9° D87.6NM KST), proceed on track 085° to DVOR/DME KST. Cross TITUR at FL120 – FL200. Cross DVOR/DME KST at 4000FT.
<b>LANOR 3H</b> After crossing LANOR (R317.7° D63.0NM KST), proceed on track 137° to DVOR/DME KST. Cross LANOR at FL120 – FL200. Cross DVOR/DME KST at 4000FT.
<b>UNIBE 2H</b> After crossing UNIBE (R129.3° D60.5NM KST), proceed on track 310° to DVOR/DME KST. Cross UNIBE at FL120 – FL200. Cross DVOR/DME KST at 4000FT.